

Supply Chain Reference Report



AFi deforestation Assessment

Result: LIKELY DEFORESTATION FREE

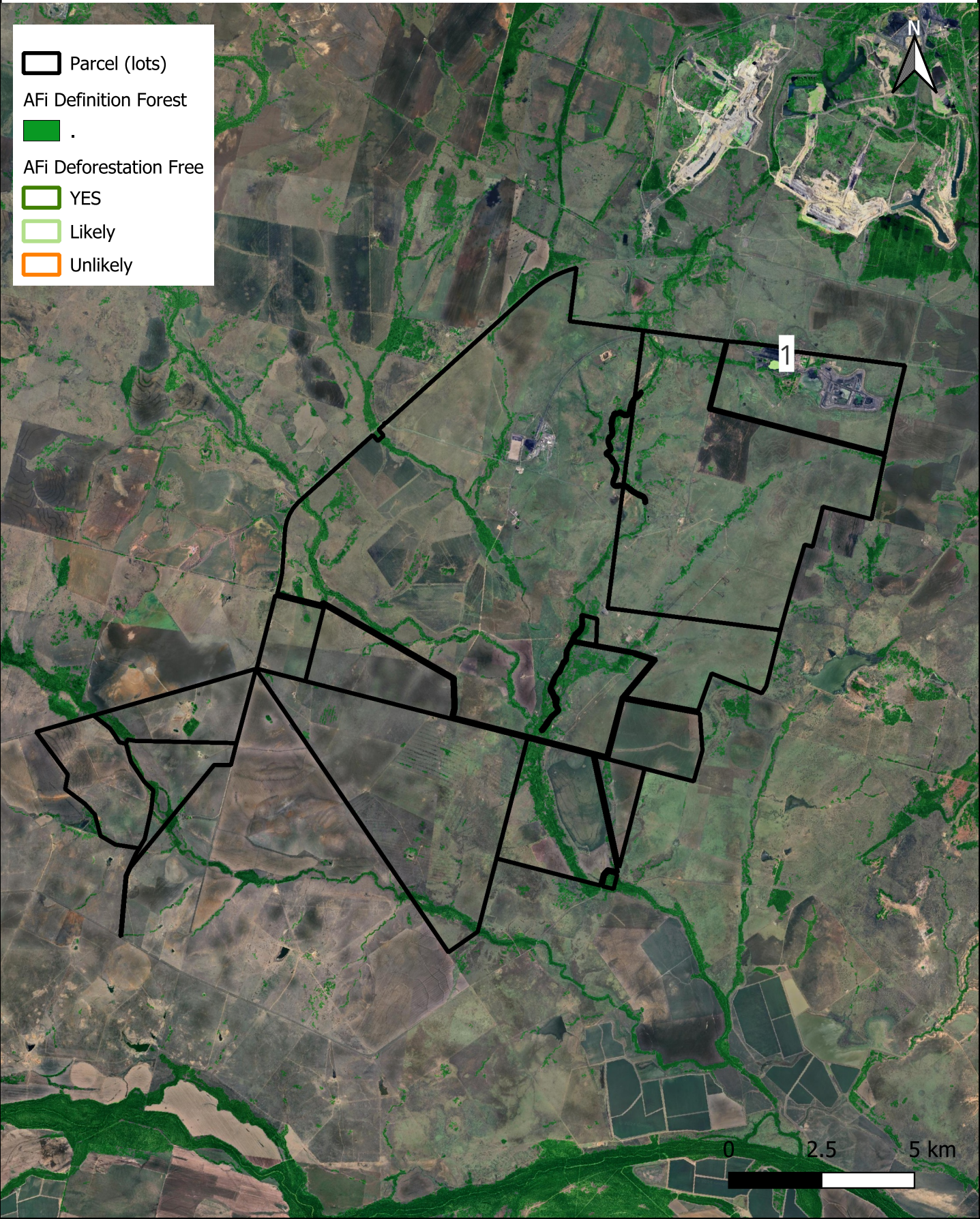
Status: Final Result

Date of initial assessment: 19/11/2024

Assessment Period: 1/1/2021 - 1/8/24

DOC: 0938

Change detection assessment of property. Polygons represent inspected disturbance zones. See full details for each zone in next section of report



Disturbance Alert Layers

QLD Slats 2021 - 2022

Geospatial Mapping Layers

Land use:
Estimated last disturbance: 0 years
State: QLD
RVM Category (QLD): X (Non Regulated)
Regulated Veg Category (Non QLD): NA

EUDR Assessor Interpretation

Disturbance Alert Confirmed: Yes
AFi Allowance: Urban Infrastructure
Confidence from geospatial analysis: High
Confidence from supplementary evidence: NA

Reviewer Comments

.. The zone partially contains vegetation that meets the AFi forest definition. The clearing event occurred in an area classified as mining under Australian land use mapping and is not considered a conversion to agriculture.

Pre Disturbance Image & Approximate Capture Date

ESRI Wayback | Date: 2021-08-18



Post Disturbance Image & Approximate Capture Date

Google Satellite 2024

